

Datasheet: MakroPorP4.2M2-30



Macroporous silicon membrane (212634-W13)

Etching

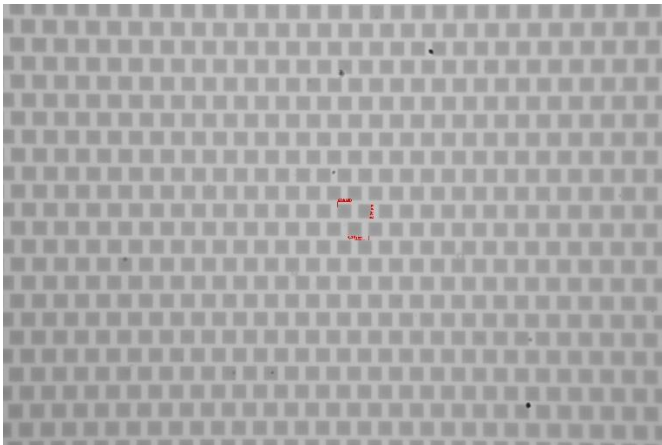
Pitch: 4.2 μm trigonal
Pore length: 28 μm
Pore diameter: 2.5 μm

Postprocessing

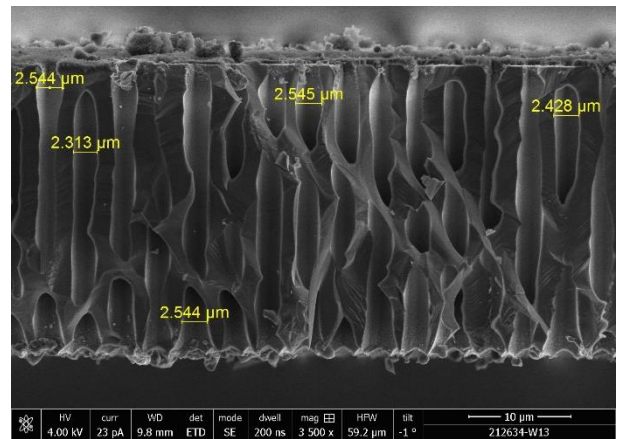
Membrane lift off
Laserdicing

Images

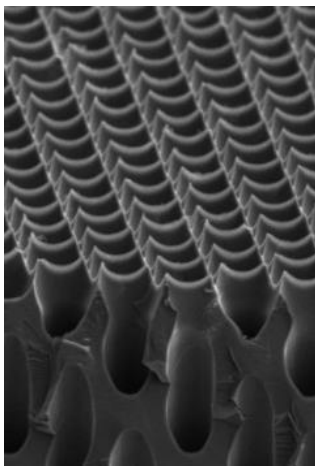
Front side (SEM)



side view (pore diameter) (SEM)



lifted side (generic) (SEM)



Remarks

- Lifted backsides are sensitive to mechanical handling. Abrasion of silicon nanotips is visible as brown “scratches” on the surface but have minor effect on the underlying pores. **We suggest using vacuum tweezers on the front side.** Depending on the thickness, flat tips with small diameters are preferred instead of suction cup tips, to minimize mechanical Stress.