

## Macroporous silicon membrane (430927-W19)

### Etching

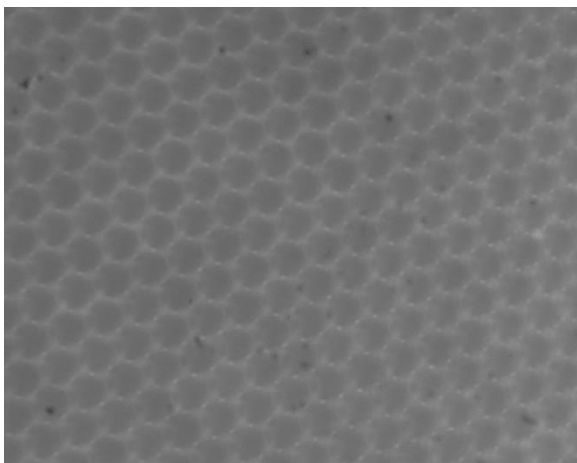
<b>Pitch:</b>	4.2 $\mu\text{m}$ trigonal
<b>Pore length:</b>	194 $\mu\text{m}$ membrane thickness
<b>Pore diameter:</b>	2.8 $\mu\text{m}$

### Postprocessing

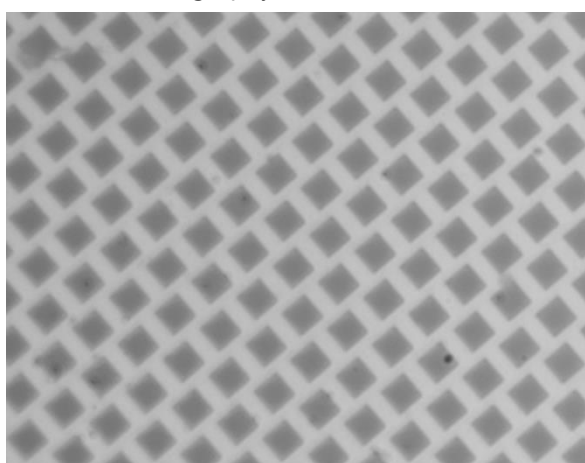
- Membrane lift-off
- laserdicing

### Images (generic)

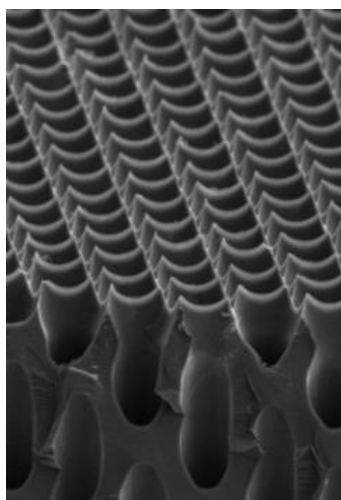
back side (lifted)



front side (lithography)



lifted side (generic) (SEM)



### Remarks

- Lifted backsides are sensitive to mechanical handling. Abrasion of silicon nanotips is visible as brown "scratches" on the surface but have minor effect on the underlying pores. **We suggest using vacuum tweezers on the front side.** Depending on the thickness, flat tips with small diameters are preferred instead of suction cup tips, to minimize mechanical Stress.
- Please be aware: Thin membranes may flip due to electrostatic forces while opening or closing transport boxes!