

Datasheet: MakroPorP1.5S1-250

Macroporous silicon (dead end pores) (241935-W19)

Etching

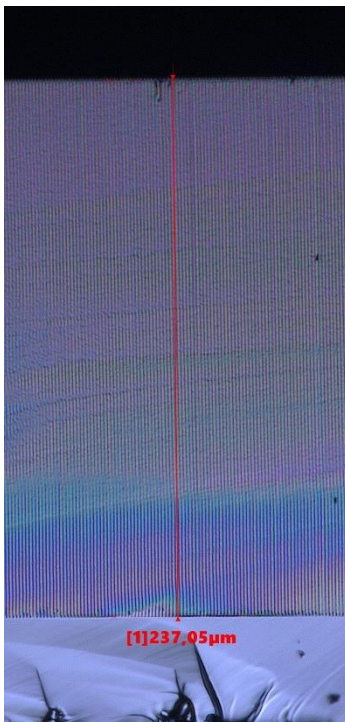
wafer size:	6 inch
pitch:	1.5 μm
pore length:	238 μm (wafer thickness: 525 μm)
pore diameter:	0.9-1 μm

Postprocessing

laser dicing

Images

Sideview



pore profile

