

## Macroporous silicon membrane (517351-W03)

### Etching

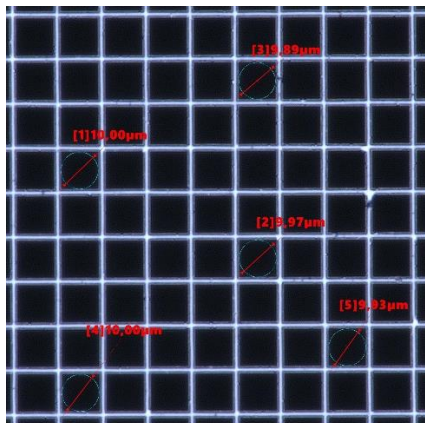
<b>Wafer Size:</b>	6 inch
<b>Pitch:</b>	12 $\mu\text{m}$ square
<b>Pore length:</b>	344 $\mu\text{m}$
<b>Pore shape:</b>	tapered
<b>Pore diameter:</b>	10 $\rightarrow$ 8 $\mu\text{m}$

### Postprocessing

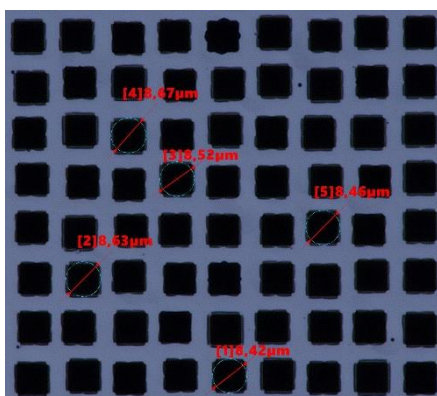
- Backside opening & widening
- Laser dicing 6.5x6.5mm
- RCA clean, thermal oxidation

### Images

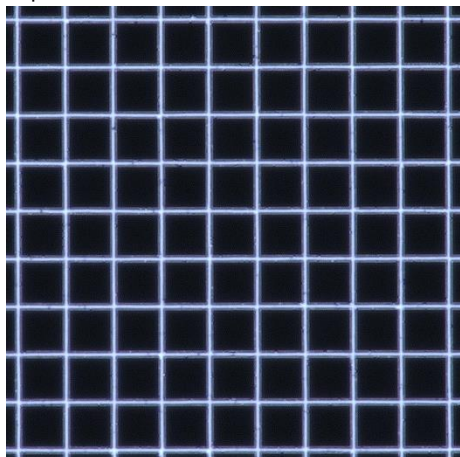
Top view (9,95 $\mu\text{m}$ )



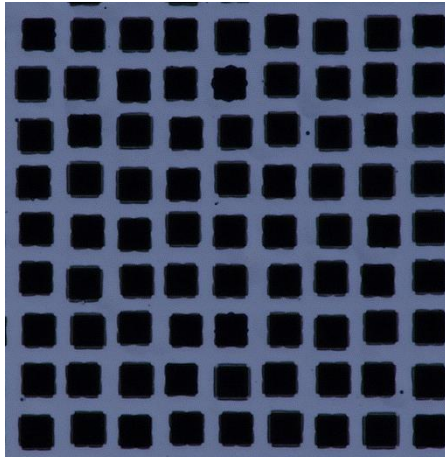
Bottom view (8,54 $\mu\text{m}$ )



Top view (without measurements)



Bottom view (without measurements)



Top view (without measurements)

---

2022-06-08, A.Dosljak

*(If not specified separately standardtolerances of  $\pm 10\%$  will apply)*

SmartMembranes GmbH | Heinrich-Damerow-Str. 4 | D-06120 Halle | <http://www.smartmembranes.de>