

Datasheet: MakroPorP12M7.5/5-300

Macroporous silicon membrane (811990-W25)

Etching

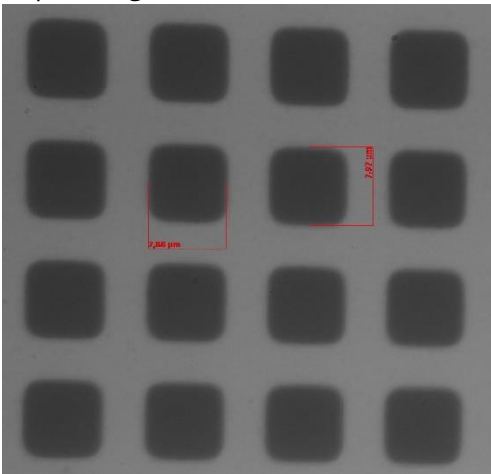
Pitch:	12 μm
Pore length:	311 μm
Pore Shape:	tapered
Pore Diameter:	7.5- 5 μm (from top to bottom)

Postprocessing

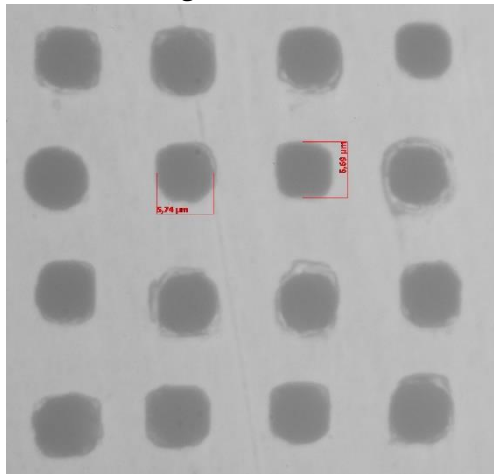
- Backside grinding & polishing
- Laserdicing

Images (optical microscope)

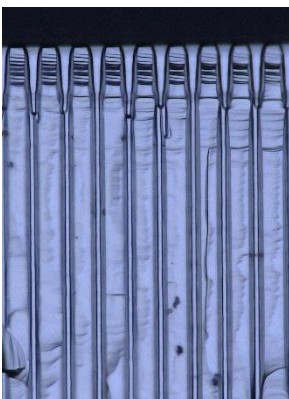
Top view (generic)



Bottom view (generic)



Side view



Remarks

Please note: According to our factsheets a taper as pictured on the left may exist close below the surface.