

# Datasheet: 719492-W01

---

## Macroporous silicon layer on n-type silicon substrate

### Etching

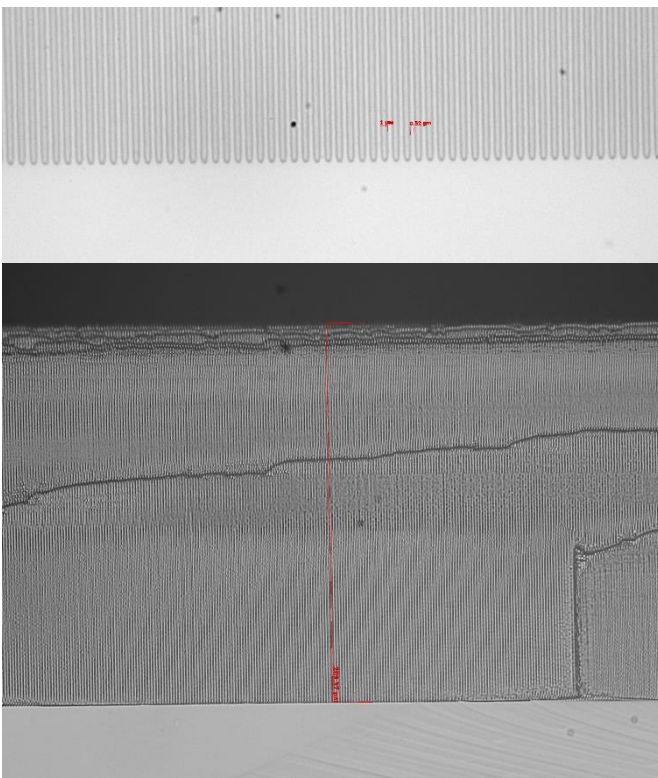
<b>Type:</b>	straight dead end pores
<b>Size:</b>	6 inch
<b>Pitch:</b>	1.5 $\mu\text{m}$ trigonal
<b>Length:</b>	209 $\mu\text{m}$ pore length (525 $\mu\text{m}$ wafer thickness)
<b>Shape:</b>	straight
<b>Diameter:</b>	1 $\mu\text{m}$

### Postprocessing

- Laserdicing 10 x 10 mm

### Measurements

Side view



Front side view (generic)



---

2018/05/30 M.Christl

*(If not specified separately standard tolerances of  $\pm 10\%$  will apply)*