

# Datasheet: MakroPorP12M5-25

---

**Macroporous silicon membrane lift-off membrane (737496-W16)**

## Etching

<b>Pitch:</b>	12 $\mu\text{m}$ square
<b>Pore length:</b>	25 $\mu\text{m}$
<b>Pore diameter:</b>	5-6 $\mu\text{m}$

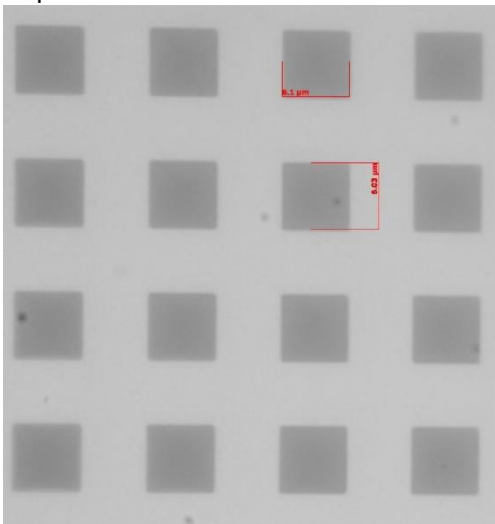
## Postprocessing

- Membrane lift-off
- Laserdicing

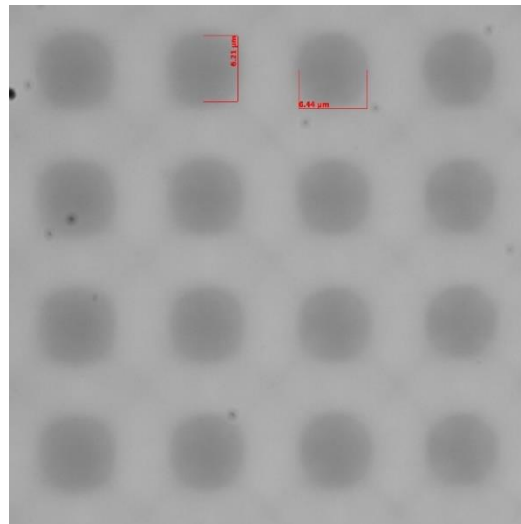
## Images

optical microscope

Top view



Bottom view



## Remarks

- Lifted backsides are sensitive to mechanical handling. Abrasion of silicon nanotips is visible as brown “scratches” on the surface but have minor effect on the underlying pores. **We suggest using vacuum tweezers on the front side.** Depending on the thickness, flat tips with small diameters are preferred instead of suction cup tips, to minimize mechanical Stress.