

Macroporous silicon membrane (739108-W01)

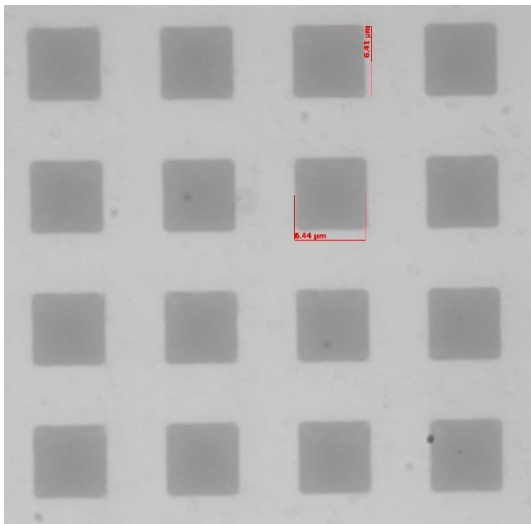
Etching

Wafer Size:	6 inch
Pitch:	12 μm square
Pore length:	350 μm membrane thickness
Pore diameter:	5- 6 μm

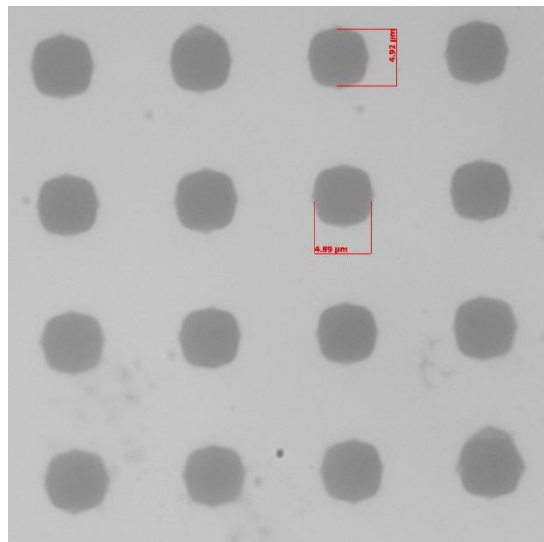
Postprocessing

- Backside opening
- Laserdicing

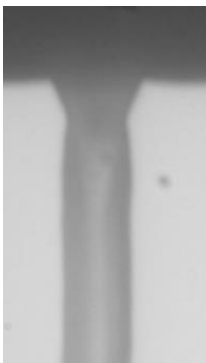
Top view



Bottom view



Side View (generic) (REM)



Please note: According to our factsheets a bottleneck as pictured on the left may exist close below the surface.