

# Datasheet: 620514-W05

---

Macropores etched into n-Si substrate (1 Ohm\*cm)

## Etching

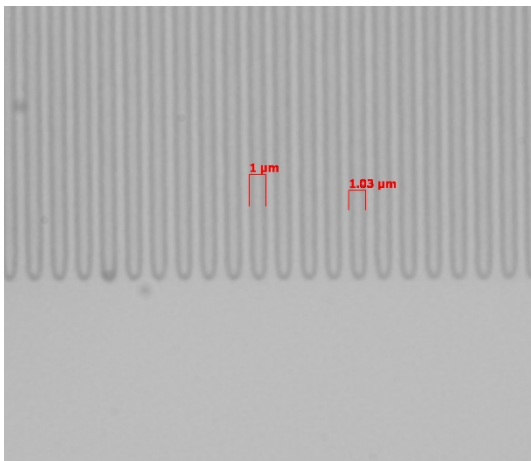
<b>Size:</b>	6 inch
<b>Pitch:</b>	1.5 $\mu\text{m}$ trigonal
<b>Length:</b>	180 $\mu\text{m}$ pore length (525 $\mu\text{m}$ wafer thickness)
<b>Shape:</b>	straight
<b>Diameter:</b>	0.8-1 $\mu\text{m}$

## Postprocessing

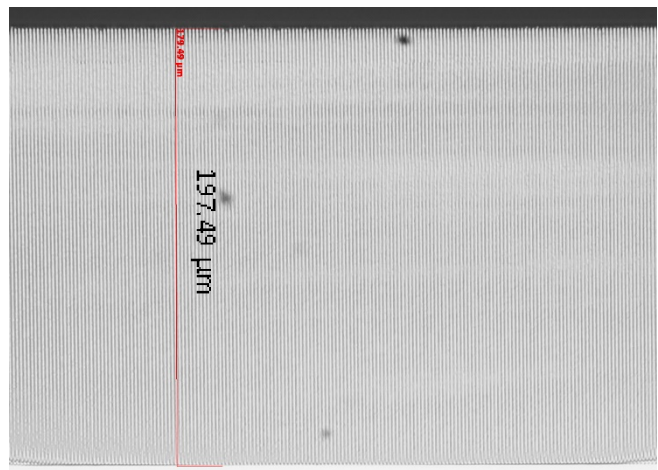
- Laserdicing 10 x 10  $\mu\text{m}$

## Measurements

Side view



Detail - pore bottom



Length